



COMPASS

# Queens Luxury Report

August 18 - 24, 2025, Residential Contracts \$1.25M+

Photo: [12-16 30th Ave, Unit 201](#)

The Queens luxury real estate market, defined as all properties priced \$1.25M and above, saw 31 contracts signed this week, made up of 17 condos, and 14 houses. The previous week saw 18 deals. For more information or data, please reach out to a Compass agent.

**\$1,617,120**

Average Asking Price

**\$1,475,000**

Median Asking Price

**\$1,238**

Average PPSF

**0%**

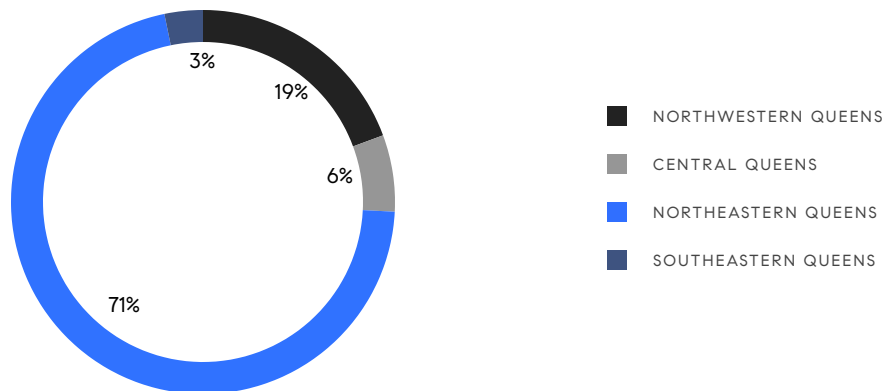
Average Discount

**\$50,130,703**

Total Volume

**91**

Average Days On Market



**17**

Condo Deal(s)

**0**

Co-op Deal(s)

**14**

Single-Family Deal(s)

**\$1,570,139**

Average Asking Price

**\$0**

Average Asking Price

**\$1,674,169**

Average Asking Price

**\$1,312,250**

Median Asking Price

**\$0**

Median Asking Price

**\$1,486,900**

Median Asking Price

**\$1,556**

Average PPSF

**\$788**

Average PPSF

**1,011**

Average SqFt

**2,306**

Average SqFt

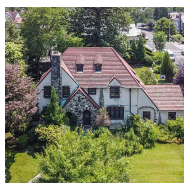


## 46-30 Center Boulevard, Unit 103

Long Island City

Contract Signed

Type	Condo	Price	\$3,200,000	Sq. Ft.	1,653	Beds	3
DOM	199	Initial	\$3,350,000	PPSF	\$1,936	Baths	3



## 55 Exeter Street

Forest Hills Gardens

Contract Signed

Type	House	Price	\$3,180,000	Sq. Ft.	4,060	Beds	5
DOM	214	Initial	\$3,600,000	PPSF	\$784	Baths	3



## 261-16 East Williston Avenue

Floral Park

Contract Signed

Type	House	Price	\$2,399,000	Sq. Ft.	4,000	Beds	4
DOM	89	Initial	\$2,399,000	PPSF	\$600	Baths	5



## 133-25 37th Avenue, Unit PHJ

Flushing

Contract Signed

Type	Condo	Price	\$1,970,500	Sq. Ft.	1,267	Beds	3
DOM	-	Initial	\$1,970,500	PPSF	\$1,556	Baths	2

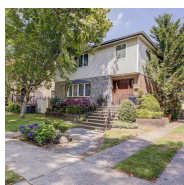


## 133-25 37th Avenue, Unit PHB

Flushing

Contract Signed

Type	Condo	Price	\$1,897,500	Sq. Ft.	1,233	Beds	3
DOM	-	Initial	\$1,897,500	PPSF	\$1,539	Baths	2



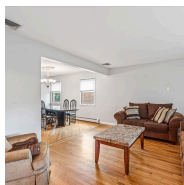
## 7015 170th Street

Hillcrest

Contract Signed

Type	House	Price	\$1,888,000	Sq. Ft.	2,744	Beds	4
DOM	38	Initial	\$1,888,000	PPSF	\$689	Baths	3

Compass is a licensed real estate broker and abides by Equal Housing Opportunity laws. All material presented herein is intended for informational purposes only. Information is compiled from sources deemed reliable but is subject to errors, omissions, changes in price, condition, sale, or withdrawal without notice. No statement is made as to the accuracy of any description. All measurements and square footages are approximate. This is not intended to solicit property already listed. Nothing herein shall be construed as legal, accounting or other professional advice outside the realm of real estate brokerage.

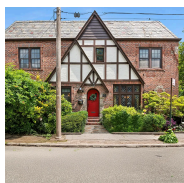


## 154-46 22nd Avenue

Flushing

Contract Signed

Type	House	Price	\$1,788,000	Sq. Ft.	2,800	Beds	4
DOM	41	Initial	\$1,788,000	PPSF	\$639	Baths	4

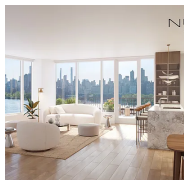


## 90-25 68th Avenue

Forest Hills Ward

Contract Signed

Type	House	Price	\$1,788,000	Sq. Ft.	-	Beds	3
DOM	41	Initial	\$1,788,000	PPSF	-	Baths	3

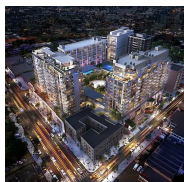


## 30-55 Vernon Boulevard, Unit 8E

Astoria

Contract Signed

Type	Condo	Price	\$1,727,500	Sq. Ft.	1,172	Beds	2
DOM	257	Initial	\$1,727,500	PPSF	\$1,474	Baths	2

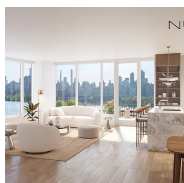


## 133-36 37th Avenue, Unit PH1B

Flushing

Contract Signed

Type	Condo	Price	\$1,680,000	Sq. Ft.	1,241	Beds	2
DOM	30	Initial	\$1,680,000	PPSF	\$1,354	Baths	2

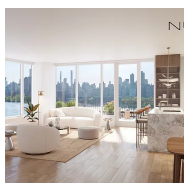


## 30-55 Vernon Boulevard, Unit 5H

Astoria

Contract Signed

Type	Condo	Price	\$1,592,955	Sq. Ft.	1,167	Beds	2
DOM	261	Initial	\$1,592,955	PPSF	\$1,365	Baths	2



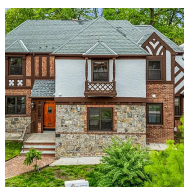
## 30-55 Vernon Boulevard, Unit 3F

Astoria

Contract Signed

Type	Condo	Price	\$1,550,943	Sq. Ft.	1,167	Beds	2
DOM	61	Initial	\$1,550,943	PPSF	\$1,329	Baths	2

Compass is a licensed real estate broker and abides by Equal Housing Opportunity laws. All material presented herein is intended for informational purposes only. Information is compiled from sources deemed reliable but is subject to errors, omissions, changes in price, condition, sale, or withdrawal without notice. No statement is made as to the accuracy of any description. All measurements and square footages are approximate. This is not intended to solicit property already listed. Nothing herein shall be construed as legal, accounting or other professional advice outside the realm of real estate brokerage.

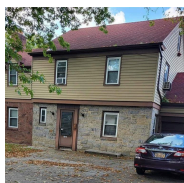


## 164-03 33rd Avenue

Murray Hill

Contract Signed

Type	House	Price	\$1,499,000	Sq. Ft.	2,500	Beds	4
DOM	65	Initial	\$1,499,000	PPSF	\$600	Baths	3



## 143-05 32nd Avenue

Flushing

Contract Signed

Type	House	Price	\$1,498,800	Sq. Ft.	2,400	Beds	4
DOM	122	Initial	\$1,498,800	PPSF	\$625	Baths	2

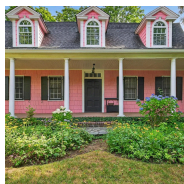


## 11-36 45th Road, Unit 204A

Long Island City

Contract Signed

Type	Condo	Price	\$1,485,000	Sq. Ft.	817	Beds	2
DOM	124	Initial	\$1,485,000	PPSF	\$1,818	Baths	2

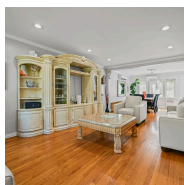


## 101 Forest Road

Douglaston

Contract Signed

Type	House	Price	\$1,475,000	Sq. Ft.	2,424	Beds	5
DOM	25	Initial	\$1,475,000	PPSF	\$609	Baths	3



## 8210 214th Street

Oakland Gardens

Contract Signed

Type	House	Price	\$1,445,555	Sq. Ft.	-	Beds	3
DOM	26	Initial	\$1,445,555	PPSF	-	Baths	2



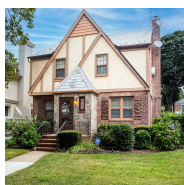
## 82-49 212th Street

Oakland Gardens

Contract Signed

Type	House	Price	\$1,349,000	Sq. Ft.	1,488	Beds	3
DOM	37	Initial	\$1,349,000	PPSF	\$907	Baths	2

Compass is a licensed real estate broker and abides by Equal Housing Opportunity laws. All material presented herein is intended for informational purposes only. Information is compiled from sources deemed reliable but is subject to errors, omissions, changes in price, condition, sale, or withdrawal without notice. No statement is made as to the accuracy of any description. All measurements and square footages are approximate. This is not intended to solicit property already listed. Nothing herein shall be construed as legal, accounting or other professional advice outside the realm of real estate brokerage.



## 81-51 189th Street

Jamaica Estates

Contract Signed

Type	House	Price	\$1,348,000	Sq. Ft.	1,456	Beds	3
DOM	11	Initial	\$1,348,000	PPSF	\$926	Baths	1



## 133-25 37 Avenue, Unit 18C

Flushing

Contract Signed

Type	Condo	Price	\$1,312,250	Sq. Ft.	803	Beds	2
DOM	1	Initial	\$1,312,250	PPSF	\$1,635	Baths	2



## 133-25 37 Avenue, Unit 18B

Flushing

Contract Signed

Type	Condo	Price	\$1,305,800	Sq. Ft.	803	Beds	2
DOM	-	Initial	\$1,305,800	PPSF	\$1,627	Baths	2

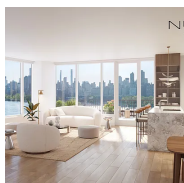


## 133-25 37 Avenue, Unit 17C

Flushing

Contract Signed

Type	Condo	Price	\$1,297,800	Sq. Ft.	803	Beds	2
DOM	1	Initial	\$1,297,800	PPSF	\$1,617	Baths	2



## 30-55 Vernon Boulevard, Unit 2G

Astoria

Contract Signed

Type	Condo	Price	\$1,295,000	Sq. Ft.	1,041	Beds	2
DOM	444	Initial	\$1,295,000	PPSF	\$1,244	Baths	2



## 133-25 37th Avenue, Unit 17B

Flushing

Contract Signed

Type	Condo	Price	\$1,290,500	Sq. Ft.	803	Beds	2
DOM	-	Initial	\$1,290,500	PPSF	\$1,608	Baths	2

Compass is a licensed real estate broker and abides by Equal Housing Opportunity laws. All material presented herein is intended for informational purposes only. Information is compiled from sources deemed reliable but is subject to errors, omissions, changes in price, condition, sale, or withdrawal without notice. No statement is made as to the accuracy of any description. All measurements and square footages are approximate. This is not intended to solicit property already listed. Nothing herein shall be construed as legal, accounting or other professional advice outside the realm of real estate brokerage.



## 133-25 37th Avenue, Unit 16C

Flushing

Contract Signed

Type	Condo	Price	\$1,282,800	Sq. Ft.	803	Beds	2
DOM	1	Initial	\$1,282,800	PPSF	\$1,598	Baths	2



## 5631 219th Street

Bayside

Contract Signed

Type	House	Price	\$1,280,000	Sq. Ft.	1,000	Beds	3
DOM	6	Initial	\$1,280,000	PPSF	\$1,280	Baths	2



## 133-25 37th Avenue, Unit 16B

Flushing

Contract Signed

Type	Condo	Price	\$1,275,500	Sq. Ft.	803	Beds	2
DOM	-	Initial	\$1,275,500	PPSF	\$1,589	Baths	2



## 133-25 37th Avenue, Unit 15C

Flushing

Contract Signed

Type	Condo	Price	\$1,267,800	Sq. Ft.	803	Beds	2
DOM	1	Initial	\$1,267,800	PPSF	\$1,579	Baths	2



## 133-25 37th Avenue, Unit 15B

Flushing

Contract Signed

Type	Condo	Price	\$1,260,500	Sq. Ft.	803	Beds	2
DOM	-	Initial	\$1,260,500	PPSF	\$1,570	Baths	2



## 226-18 77th Avenue

Oakland Gardens

Contract Signed

Type	House	Price	\$1,250,000	Sq. Ft.	1,438	Beds	4
DOM	114	Initial	\$1,288,000	PPSF	\$870	Baths	3

Compass is a licensed real estate broker and abides by Equal Housing Opportunity laws. All material presented herein is intended for informational purposes only. Information is compiled from sources deemed reliable but is subject to errors, omissions, changes in price, condition, sale, or withdrawal without notice. No statement is made as to the accuracy of any description. All measurements and square footages are approximate. This is not intended to solicit property already listed. Nothing herein shall be construed as legal, accounting or other professional advice outside the realm of real estate brokerage.



50-55 Cloverdale Boulevard  
Bayside

Contract Signed

Type	House	Price	\$1,250,000	Sq. Ft.	1,360	Beds	3
DOM	60	Initial	\$1,250,000	PPSF	\$920	Baths	2

Compass is a licensed real estate broker and abides by Equal Housing Opportunity laws. All material presented herein is intended for informational purposes only. Information is compiled from sources deemed reliable but is subject to errors, omissions, changes in price, condition, sale, or withdrawal without notice. No statement is made as to the accuracy of any description. All measurements and square footages are approximate. This is not intended to solicit property already listed. Nothing herein shall be construed as legal, accounting or other professional advice outside the realm of real estate brokerage.